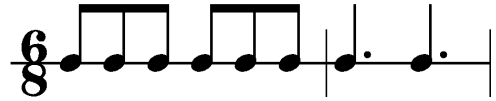


# M/m Rhythm Patterns in 6/8

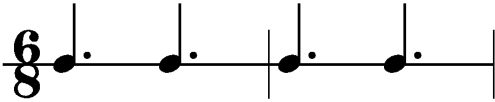
1



2



3



4



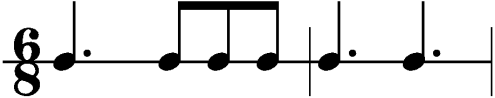
5



6



7



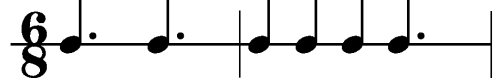
8



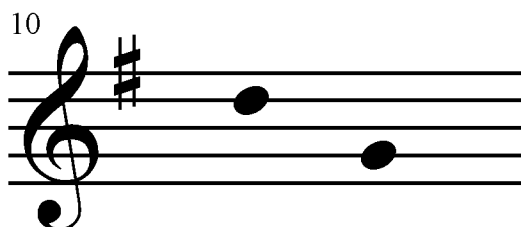
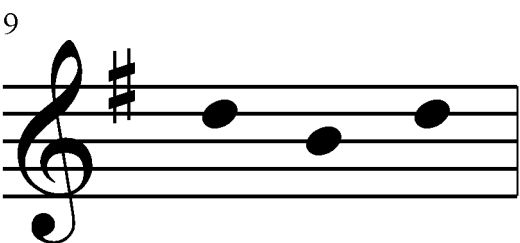
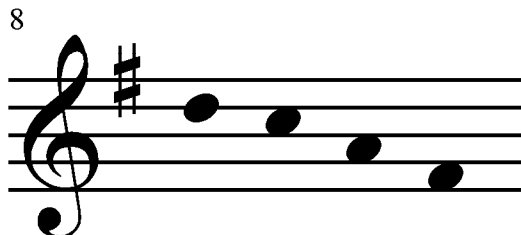
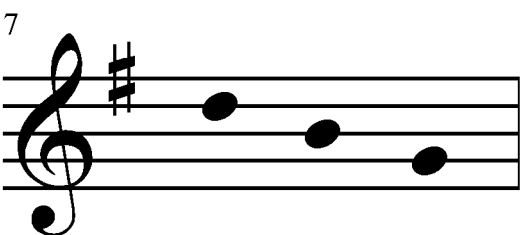
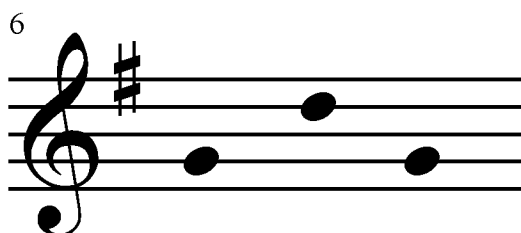
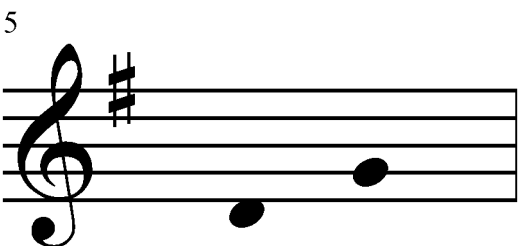
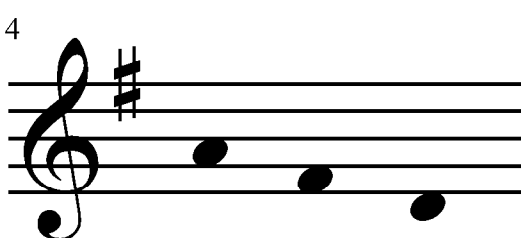
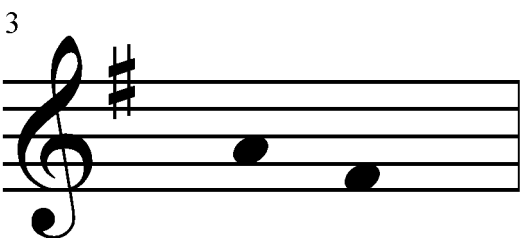
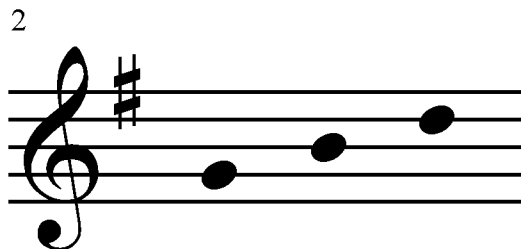
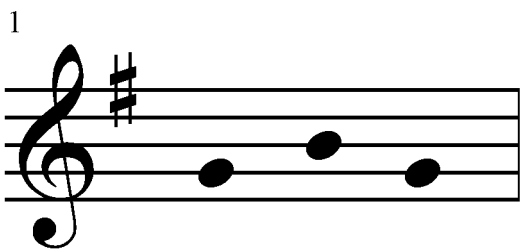
9



10

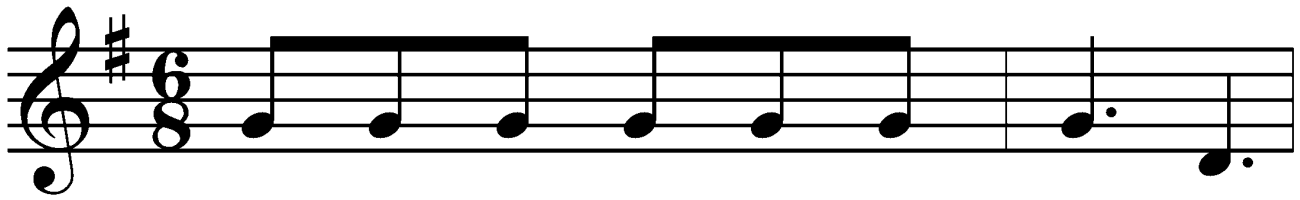


# Tonal Patterns in G-DO

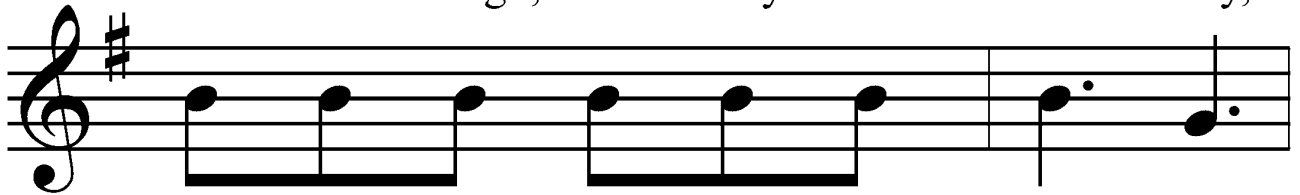


# Santy Maloney

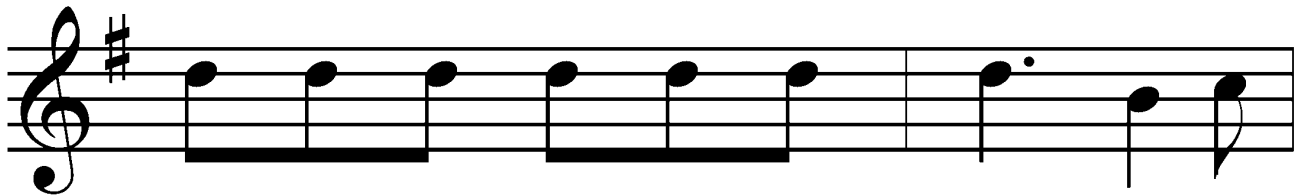
Traditional



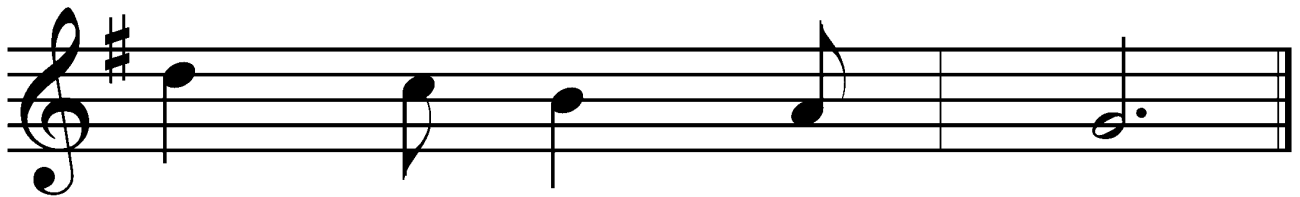
Here we go, San - ty Ma - lo - ney,



Here we go, San - ty Ma - lo - ney,

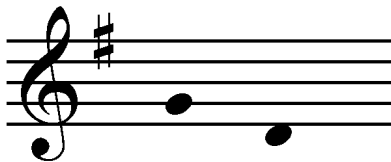


Here we go, San - ty Ma - lo - ney, As

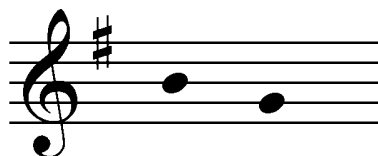


we go round and round.

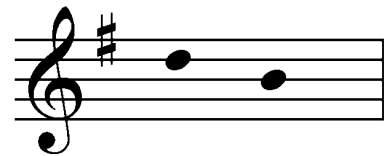
Pattern 1



Pattern 2

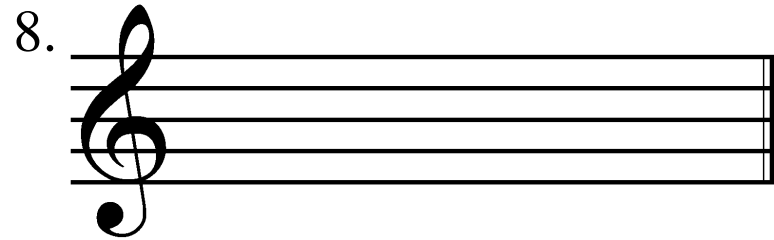
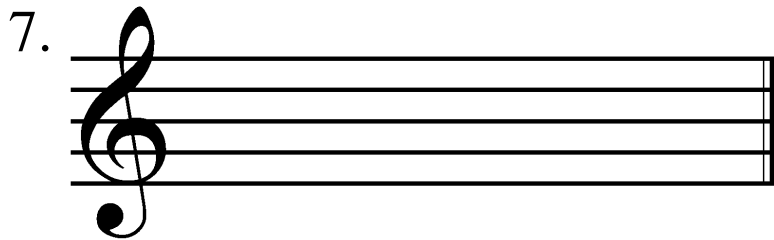
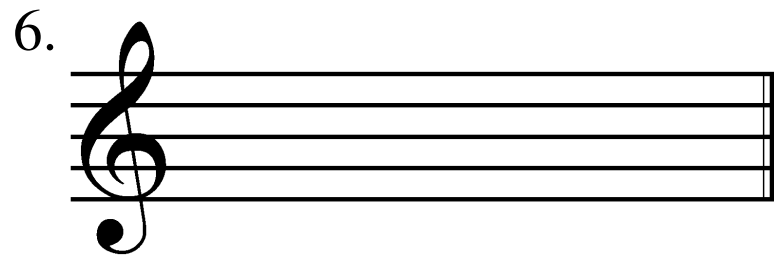
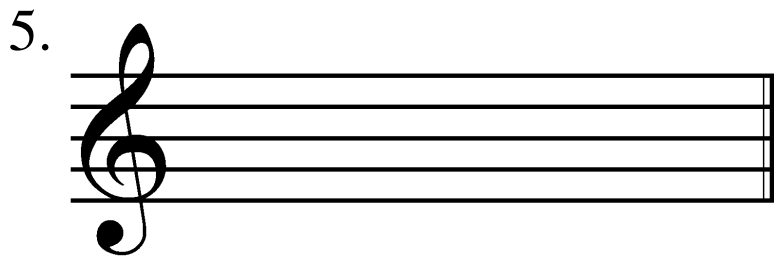
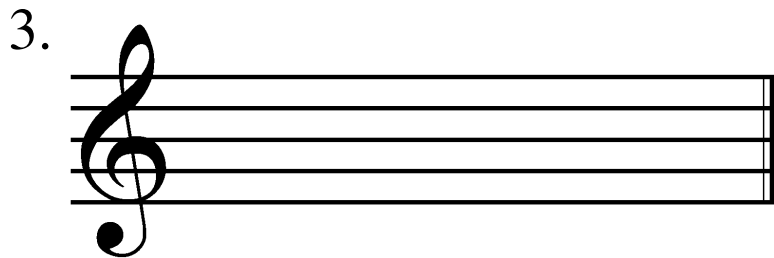
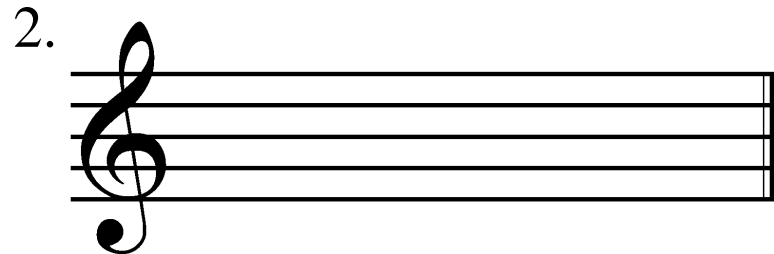
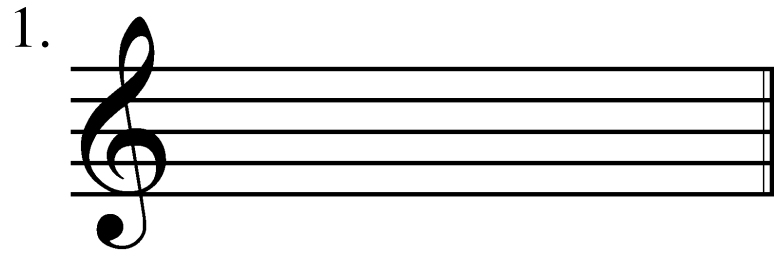


Pattern 3



Activity: \_\_\_\_\_

Date: \_\_\_\_\_



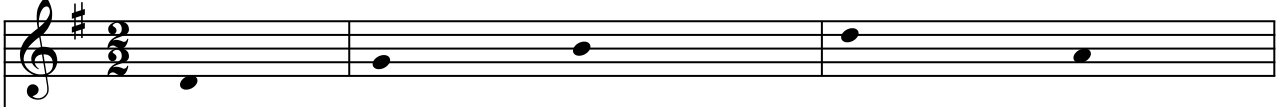
# ALLEY-ALLEY-O

## Tonal Patterns


Traditional

I V

Tonal Patterns



Melody




There's a big ship sail - ing on the Al - ley Al - ley O, the


Detailed description: This system shows the first two measures of the song. The 'Tonal Patterns' staff has a treble clef, a key signature of one sharp (F#), and a 3/2 time signature. It contains two whole notes: G4 (labeled 'I') and D5 (labeled 'V'). The 'Melody' staff has the same key signature and time signature. It contains a sequence of notes: G4 (quarter), A4 (quarter), B4 (quarter), C5 (quarter), D5 (quarter), E5 (quarter), F#5 (quarter), G5 (quarter), F#5 (quarter), E5 (quarter), D5 (quarter), C5 (quarter), B4 (quarter), A4 (quarter), G4 (quarter).

I V

T.P.



Mel.




Al - ley Al - ley O, the Al - ley Al - ley O. There's a


Detailed description: This system shows measures 3 and 4. The 'T.P.' staff has a treble clef, a key signature of one sharp (F#), and a 3/2 time signature. It contains two whole notes: G4 (labeled 'I') and D5 (labeled 'V'). The 'Mel.' staff has the same key signature and time signature. It contains a sequence of notes: G4 (quarter), A4 (quarter), B4 (quarter), C5 (quarter), D5 (quarter), E5 (quarter), F#5 (quarter), G5 (quarter), F#5 (quarter), E5 (quarter), D5 (quarter), C5 (quarter), B4 (quarter), A4 (quarter), G4 (quarter).

I V

T.P.



Mel.

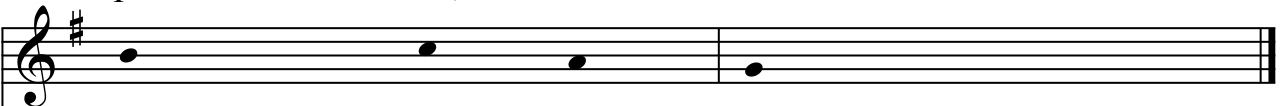


big ship sail - ing on the Al - ley Al - ley O on the

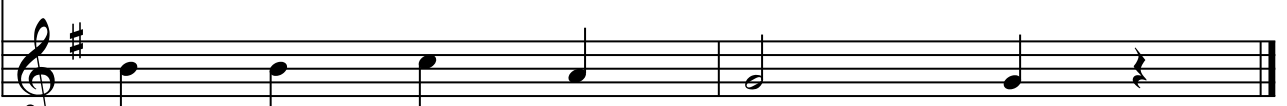
Detailed description: This system shows measures 5 and 6. The 'T.P.' staff has a treble clef, a key signature of one sharp (F#), and a 3/2 time signature. It contains two whole notes: G4 (labeled 'I') and D5 (labeled 'V'). The 'Mel.' staff has the same key signature and time signature. It contains a sequence of notes: G4 (quarter), A4 (quarter), B4 (quarter), C5 (quarter), D5 (quarter), E5 (quarter), F#5 (quarter), G5 (quarter), F#5 (quarter), E5 (quarter), D5 (quarter), C5 (quarter), B4 (quarter), A4 (quarter), G4 (quarter).

I V I

T.P.



Mel.



nine - tenth of Sep - tem - - - ber.

Detailed description: This system shows measures 7 and 8. The 'T.P.' staff has a treble clef, a key signature of one sharp (F#), and a 3/2 time signature. It contains three whole notes: G4 (labeled 'I'), D5 (labeled 'V'), and G4 (labeled 'I'). The 'Mel.' staff has the same key signature and time signature. It contains a sequence of notes: G4 (quarter), A4 (quarter), B4 (quarter), C5 (quarter), D5 (quarter), E5 (quarter), F#5 (quarter), G5 (quarter), F#5 (quarter), E5 (quarter), D5 (quarter), C5 (quarter), B4 (quarter), A4 (quarter), G4 (quarter).

Song Title: \_\_\_\_\_

G-DO:



F-DO:



D-DO:



B $\flat$ -DO:

